

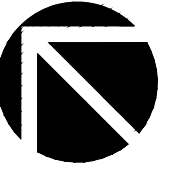
PREPARED FOR:
 Gourmet Provisions
 667 Howard St
 San Francisco, CA
 Tel (415) 867-1812

161-165 NATOMA ST
 SAN FRANCISCO, CA

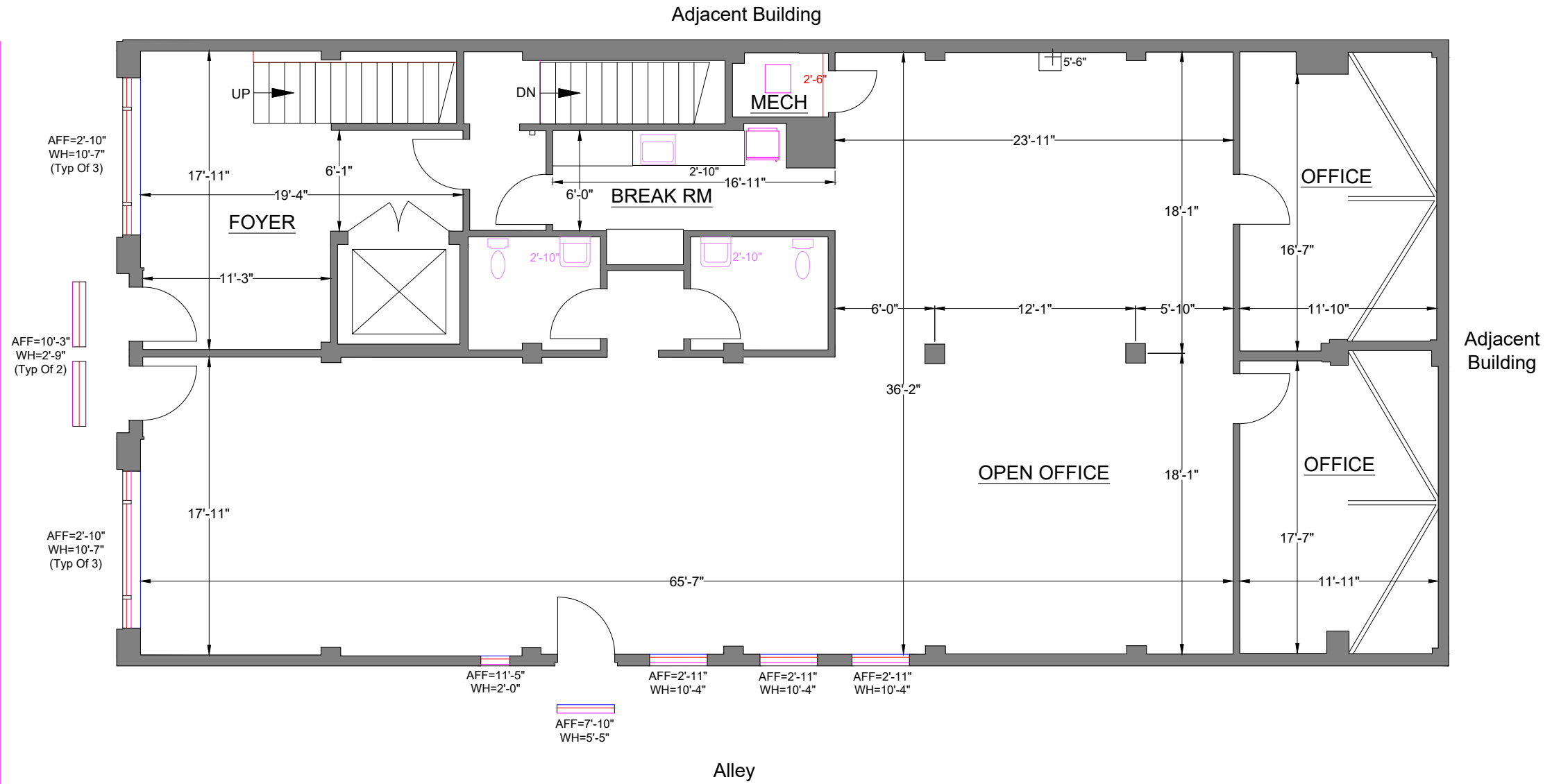
FIRST FLOOR
 (As Measured: May 2026)

FLOOR PLAN

*Measured Area: 2,991 s.f.



NATOMA STREET



ELEVATION LEGEND

Spot Height (Above Finished Floor): + X'-X"

Sill Height (Above Finished Floor): AFF= X'-X"

Window Height: WH= X'-X"

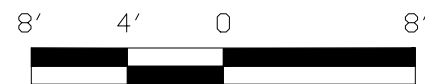
Building Billing Summary

Measured Area: 5,680 s.f.

Exterior Area: 42 s.f.

Survey Accuracy: +/- 0.16 %

Note: All dimensions shown are rounded to the nearest inch, for informational purposes only. All measurements are recorded to 1/8" accuracy as documented in the final CAD drawing supplied.



SCALE: 1/8" = 1' - 0"

LASERTECH® is a registered US trademark of Lasertech® Floorplans Ltd. Copyright 1998 Lasertech® Floorplans Ltd., All Rights Reserved

*Measured Area represents the footprint of the floor, and is used solely for billing purposes. It is NOT to be used for leasing purposes.



<https://LT-FP.com>

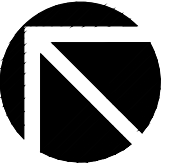
TEL: (888) 393-6655
 FILE: 26-092

PREPARED FOR:
 Gourmet Provisions
 667 Howard St
 San Francisco, CA
 Tel (415) 867-1812

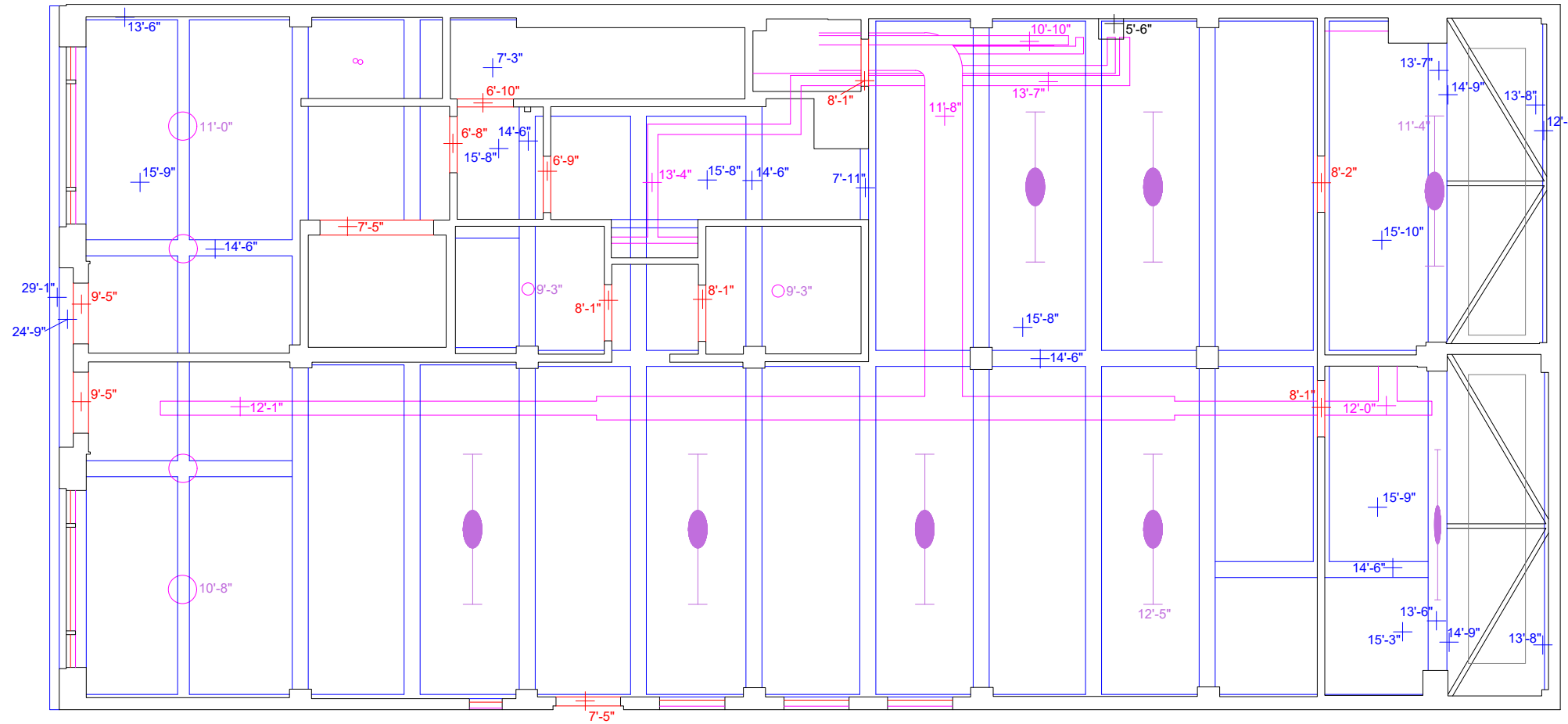
161-165 NATOMA ST
 SAN FRANCISCO, CA

FIRST FLOOR
 (As Measured: May 2026)

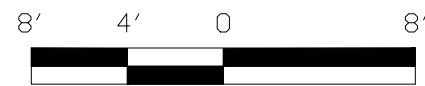
REFLECTED CEILING PLAN



NATOMA STREET



ELEVATION LEGEND	
Spot Height (Above Finished Floor):	+ X'-X"
Sill Height (Above Finished Floor):	AFF= X'-X"
Window Height:	WH= X'-X"
Survey Accuracy: +/- 0.16 %	



SCALE: 1/8" = 1' -0"

LASERTECH® is a registered US trademark of Lasertech® Floorplans Ltd.
 Copyright 1998 Lasertech® Floorplans Ltd., All Rights Reserved



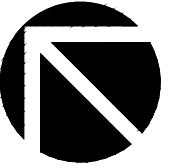
<https://LT-FP.com>
 TEL: (888) 393-6655
 FILE: 26-092

PREPARED FOR:
 Gourmet Provisions
 667 Howard St
 San Francisco, CA
 Tel (415) 867-1812

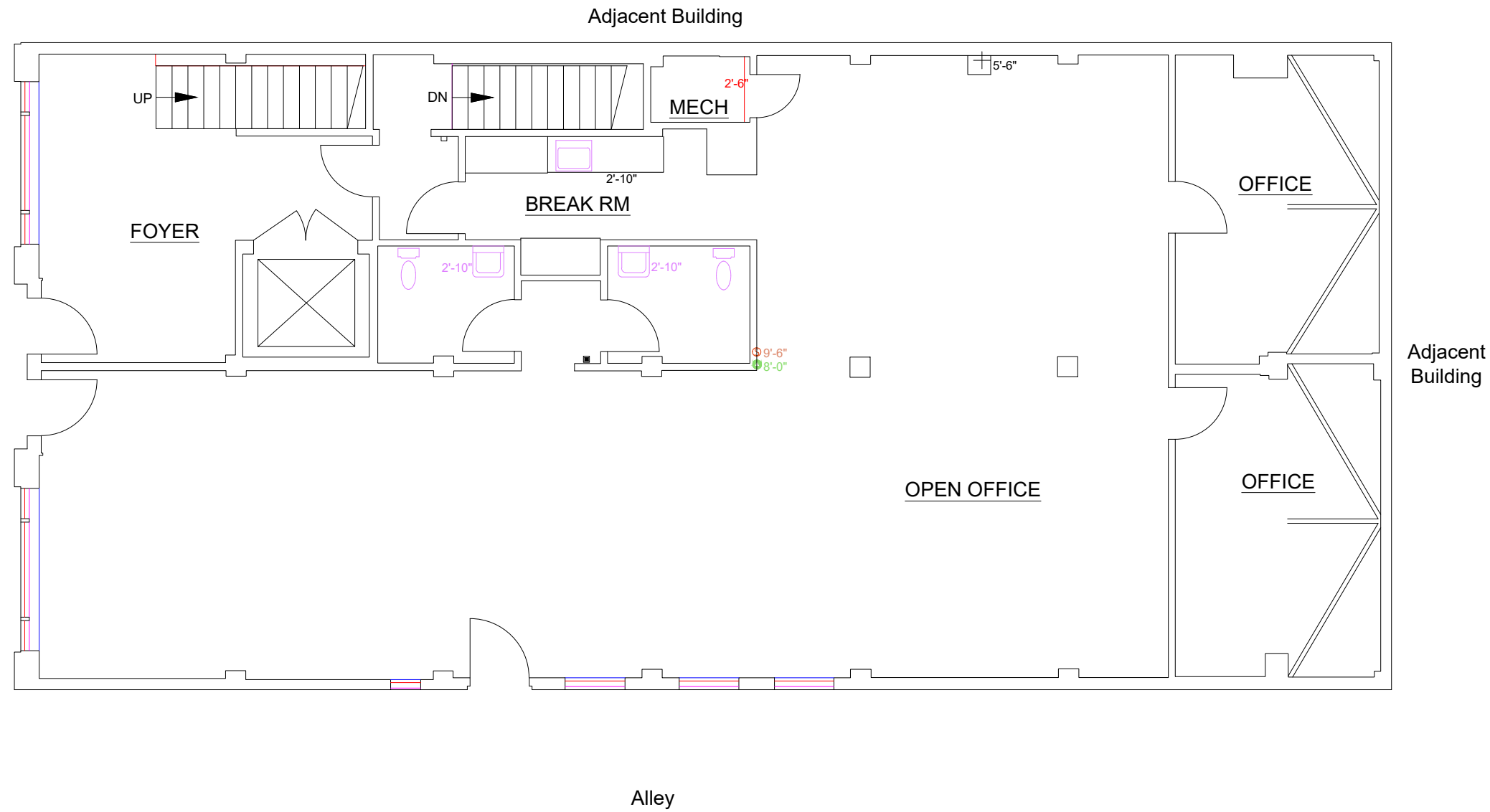
161-165 NATOMA ST
 SAN FRANCISCO, CA

FIRST FLOOR
 (As Measured: May 2026)

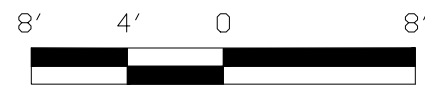
FIRE SAFETY PLAN



NATOMA STREET



ELEVATION LEGEND	
Spot Height (Above Finished Floor):	+ X'-X"
Sill Height (Above Finished Floor):	AFF= X'-X"
Window Height:	WH= X'-X"
Survey Accuracy: +/- 0.16 %	



SCALE: 1/8" = 1' -0"

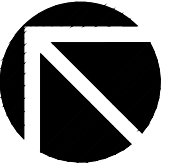
LASERTECH® is a registered US trademark of Lasertech® Floorplans Ltd.
 Copyright 1998 Lasertech® Floorplans Ltd., All Rights Reserved



<https://LT-FP.com>

TEL: (888) 393-6655
 FILE: 26-092

ROOM AREA PLAN

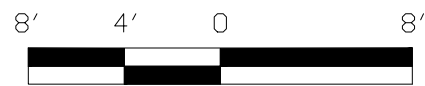


NATOMA STREET



Survey Accuracy: +/- 0.16 %

Note: All dimensions shown are rounded to the nearest inch, for informational purposes only. All measurements are recorded to 1/8" accuracy as documented in the final CAD drawing supplied.



SCALE: 1/8" = 1' - 0"

LASERTECH® is a registered US trademark of Lasertech® Floorplans Ltd. Copyright 1998 Lasertech® Floorplans Ltd., All Rights Reserved

*Measured Area represents the footprint of the floor, and is used solely for billing purposes. It is NOT to be used for leasing purposes.

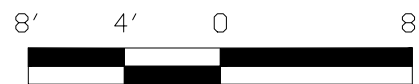
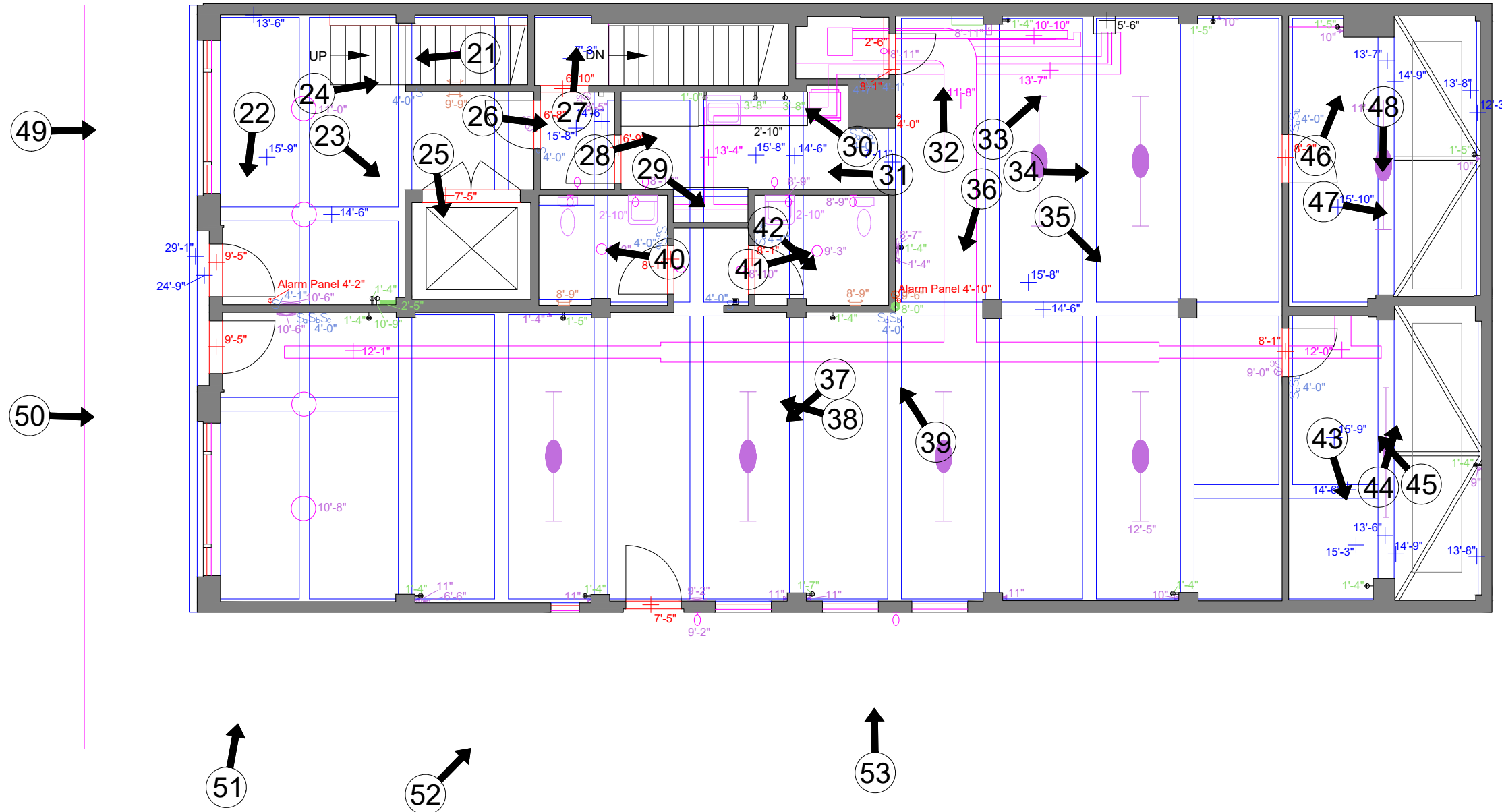


<https://LT-FP.com>
 TEL: (888) 393-6655
 FILE: 26-092

PHOTO KEYMAP



NATOMA STREET



SCALE: 1/8" = 1' - 0"

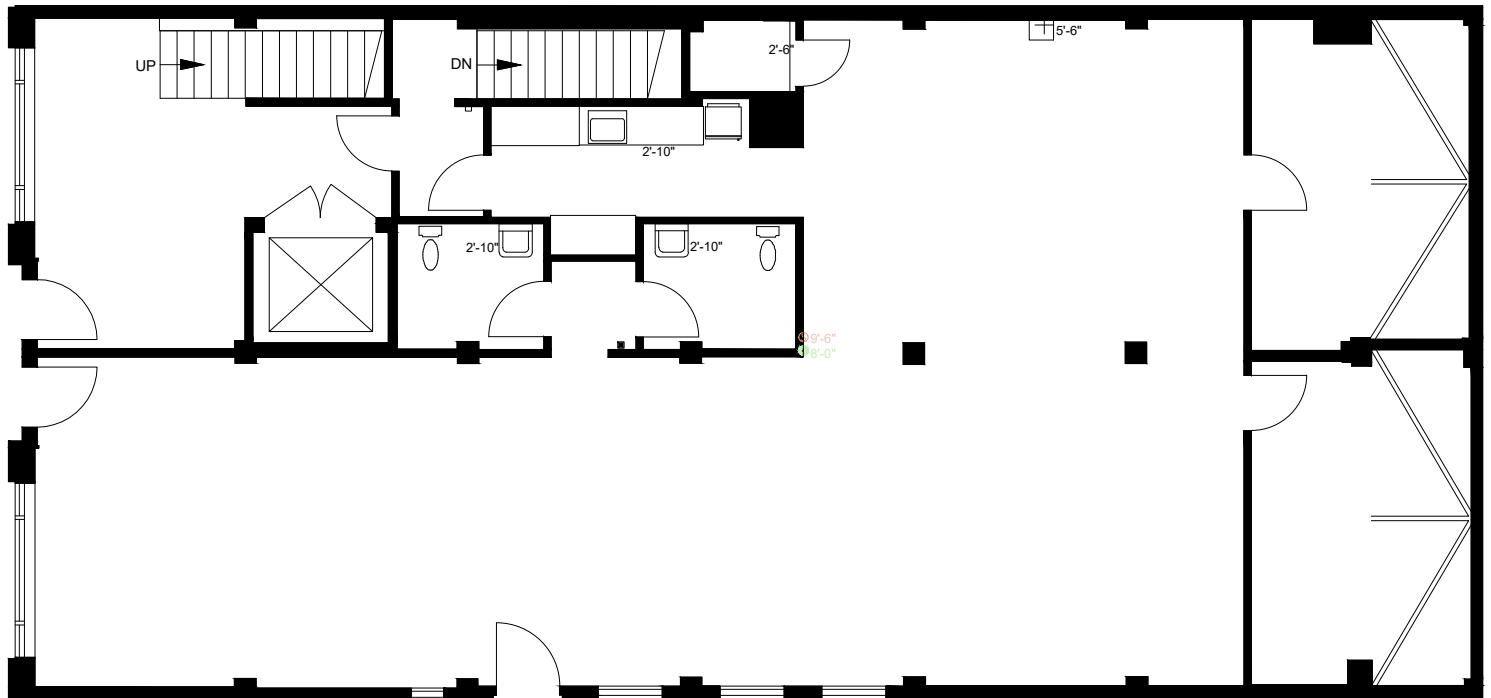


EVACUATION PLAN

161-165 NATOMA ST

1 st
Floor


EMERGENCY PHONE #: 911



 YOU ARE HERE  ELEVATOR **FC** FIRE HOSE CAB

 STAIRWAY  FIRE EXTINGUISHER  PULL BOX

 EXIT ROUTES

 **PERSONS WITH DISABILITIES**
SHALL CALL 911 TO REPORT THEIR
LOCATION & PROCEED TO NEAREST
STAIRWELL & AWAIT ASSISTANCE.
ALL ALARMS - BELL SOUND



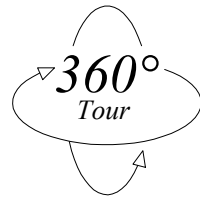
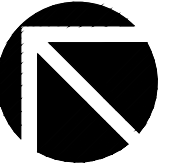
PREPARED FOR:
 Gourmet Provisions
 667 Howard St
 San Francisco, CA
 Tel (415) 867-1812

161-165 NATOMA ST
 SAN FRANCISCO, CA

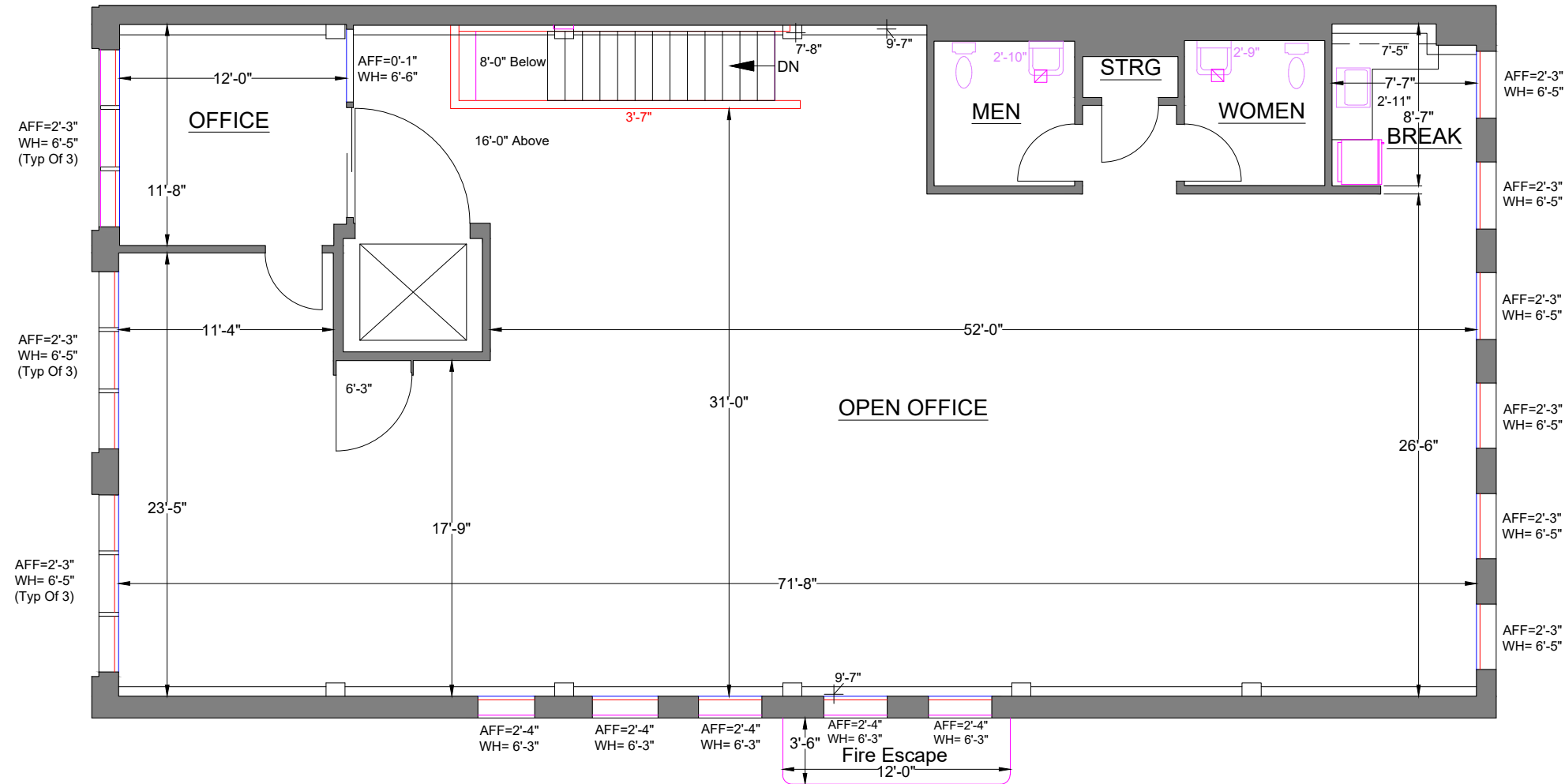
SECOND FLOOR
 (As Measured: May 2026)

FLOOR PLAN

*Measured Area: 2,689 s.f.
 Exterior Area: 42 s.f.



CLICK HERE



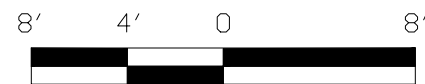
ELEVATION LEGEND

Spot Height (Above Finished Floor): + X'-X"

Sill Height (Above Finished Floor): AFF= X'-X"
 Window Height: WH= X'-X"

Survey Accuracy: +/- 0.13%

Note: All dimensions shown are rounded to the nearest inch, for informational purposes only. All measurements are recorded to 1/8" accuracy as documented in the final CAD drawing supplied.



SCALE: 1/8" = 1' - 0"

LASERTECH® is a registered US trademark of Lasertech® Floorplans Ltd. Copyright 1998 Lasertech® Floorplans Ltd., All Rights Reserved

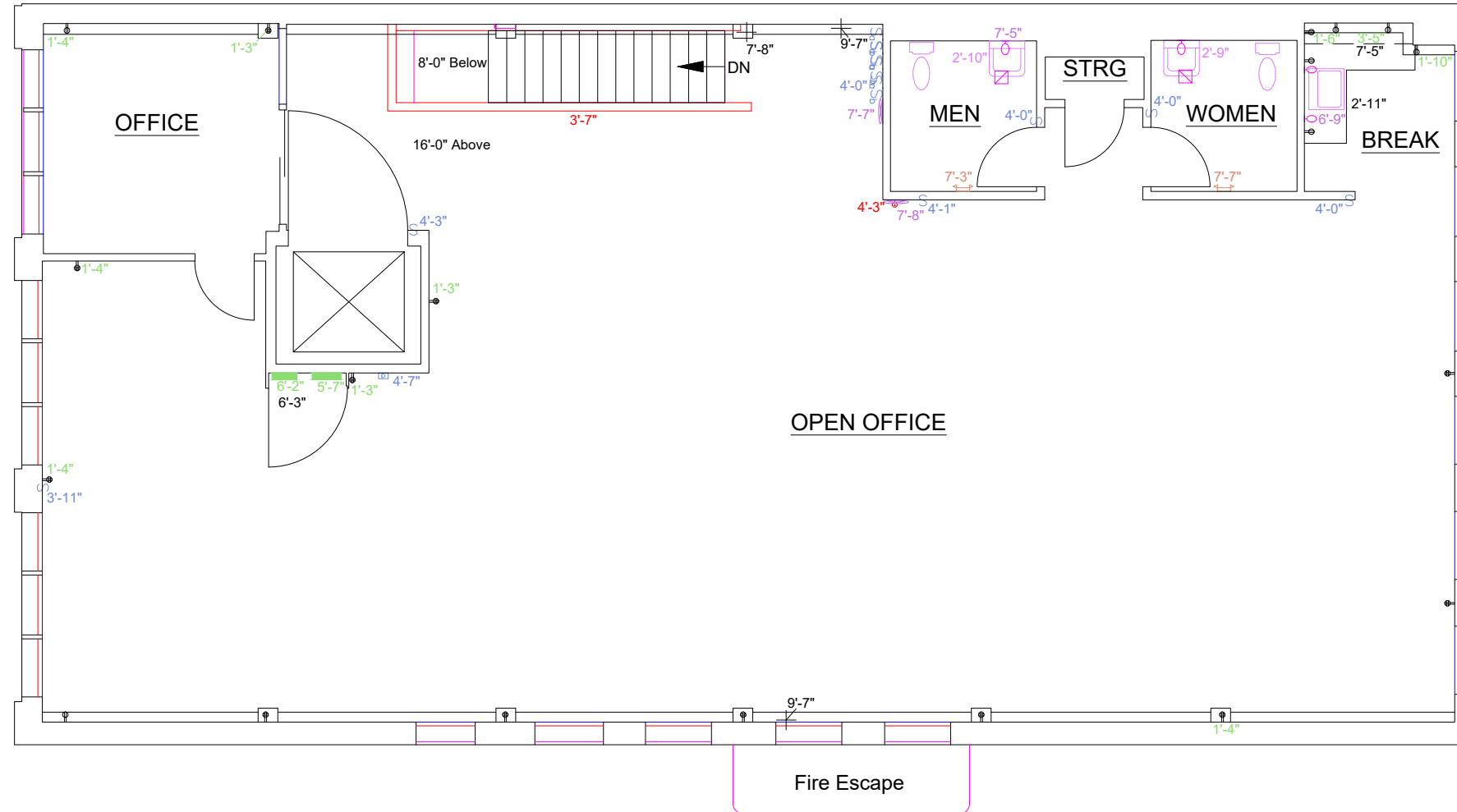
*Measured Area represents the footprint of the floor, and is used solely for billing purposes. It is NOT to be used for leasing purposes.



<https://LT-FP.com>

TEL: (888) 393-6655
 FILE: 26-092

ELECTRICAL PLAN



ELEVATION LEGEND	
Spot Height (Above Finished Floor):	+ X'-X"
Sill Height (Above Finished Floor):	AFF= X'-X"
Window Height:	WH= X'-X"
Survey Accuracy: +/- 0.13 %	



SCALE: 1/8" = 1' -0"

LASERTECH® is a registered US trademark of Lasertech® Floorplans Ltd.
 Copyright 1998 Lasertech® Floorplans Ltd., All Rights Reserved



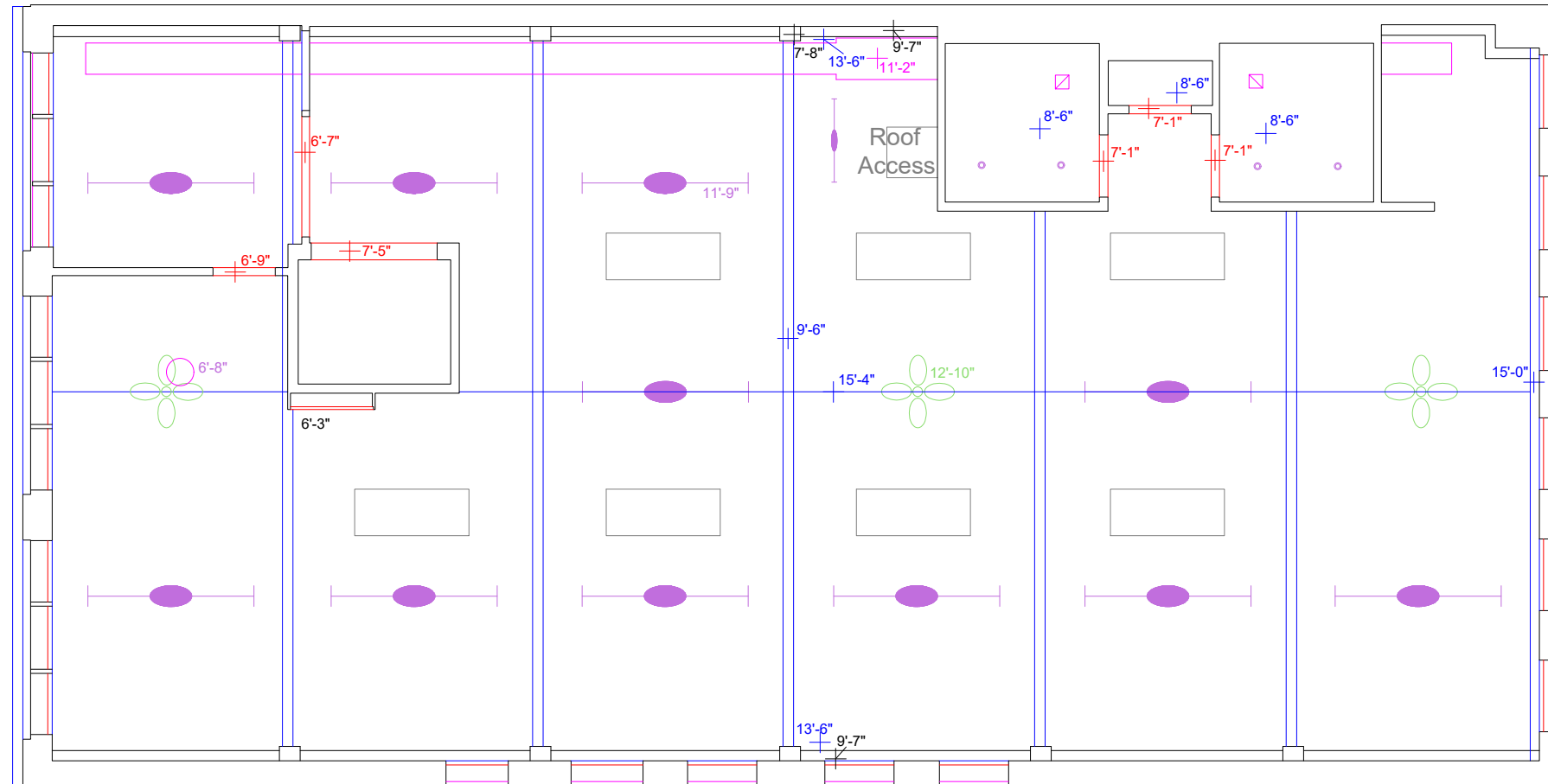
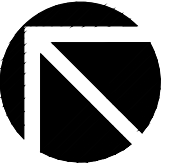
<https://LT-FP.com>
 TEL: (888) 393-6655
 FILE: 26-092

PREPARED FOR:
 Gourmet Provisions
 667 Howard St
 San Francisco, CA
 Tel (415) 867-1812

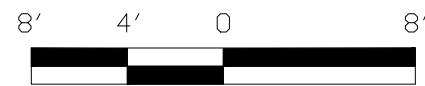
161-165 NATOMA ST
 SAN FRANCISCO, CA

SECOND FLOOR
 (As Measured: May 2026)

REFLECTED CEILING PLAN



ELEVATION LEGEND
 Spot Height (Above Finished Floor): + X'-X"
 Sill Height (Above Finished Floor): AFF= X'-X"
 Window Height: WH= X'-X"
 Survey Accuracy: +/- 0.13%



SCALE: 1/8" = 1' - 0"

LASERTECH® is a registered US trademark of Lasertech® Floorplans Ltd.
 Copyright 1998 Lasertech® Floorplans Ltd., All Rights Reserved



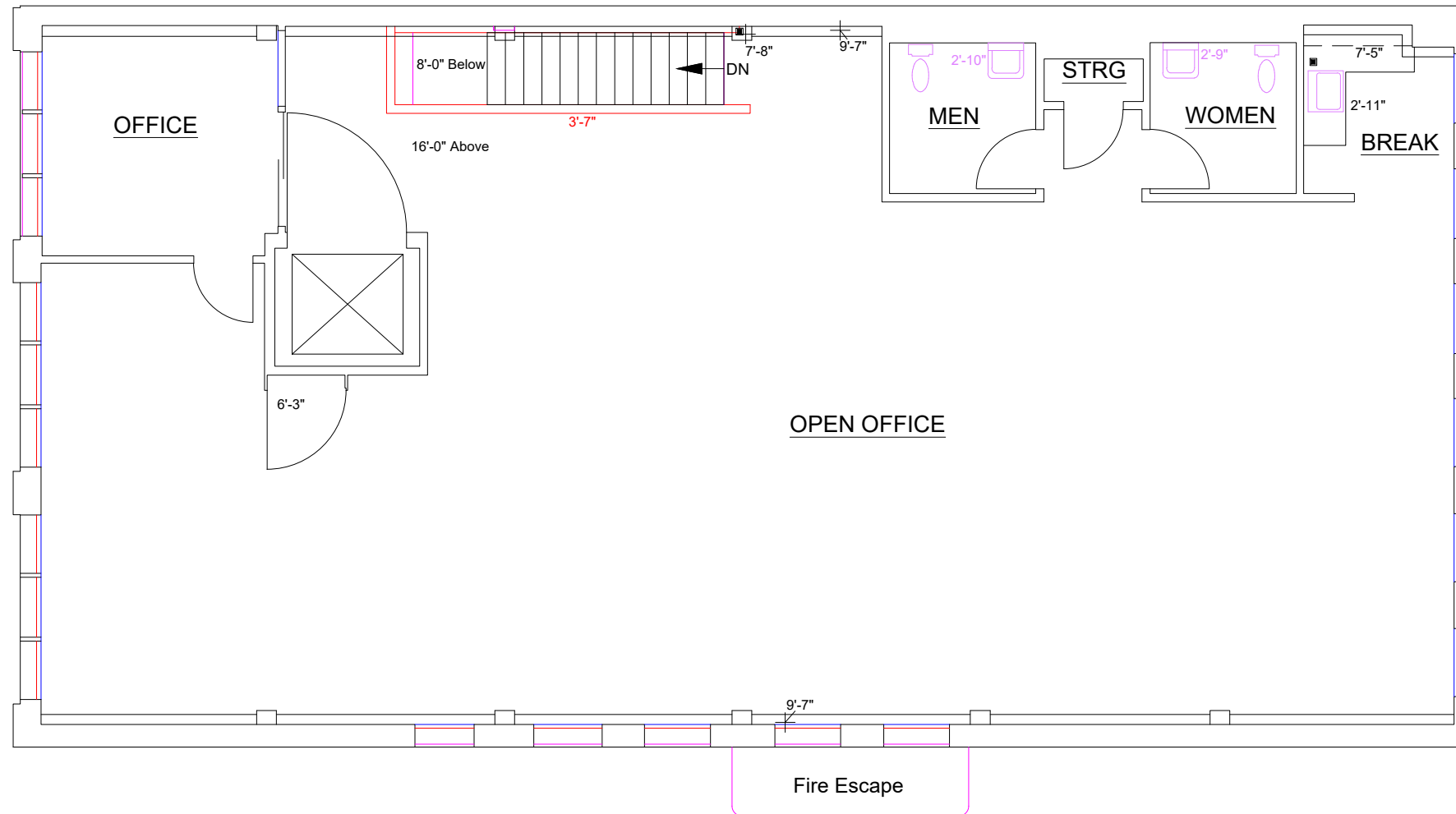
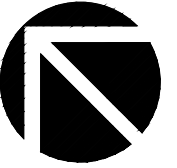
<https://LT-FP.com>
 TEL: (888) 393-6655
 FILE: 26-092

PREPARED FOR:
 Gourmet Provisions
 667 Howard St
 San Francisco, CA
 Tel (415) 867-1812

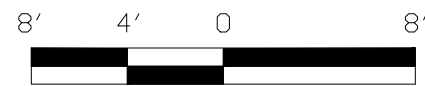
161-165 NATOMA ST
 SAN FRANCISCO, CA

SECOND FLOOR
 (As Measured: May 2026)

FIRE SAFETY PLAN



ELEVATION LEGEND
 Spot Height (Above Finished Floor): + X'-X"
 Sill Height (Above Finished Floor): AFF= X'-X"
 Window Height: WH= X'-X"
 Survey Accuracy: +/- 0.13%



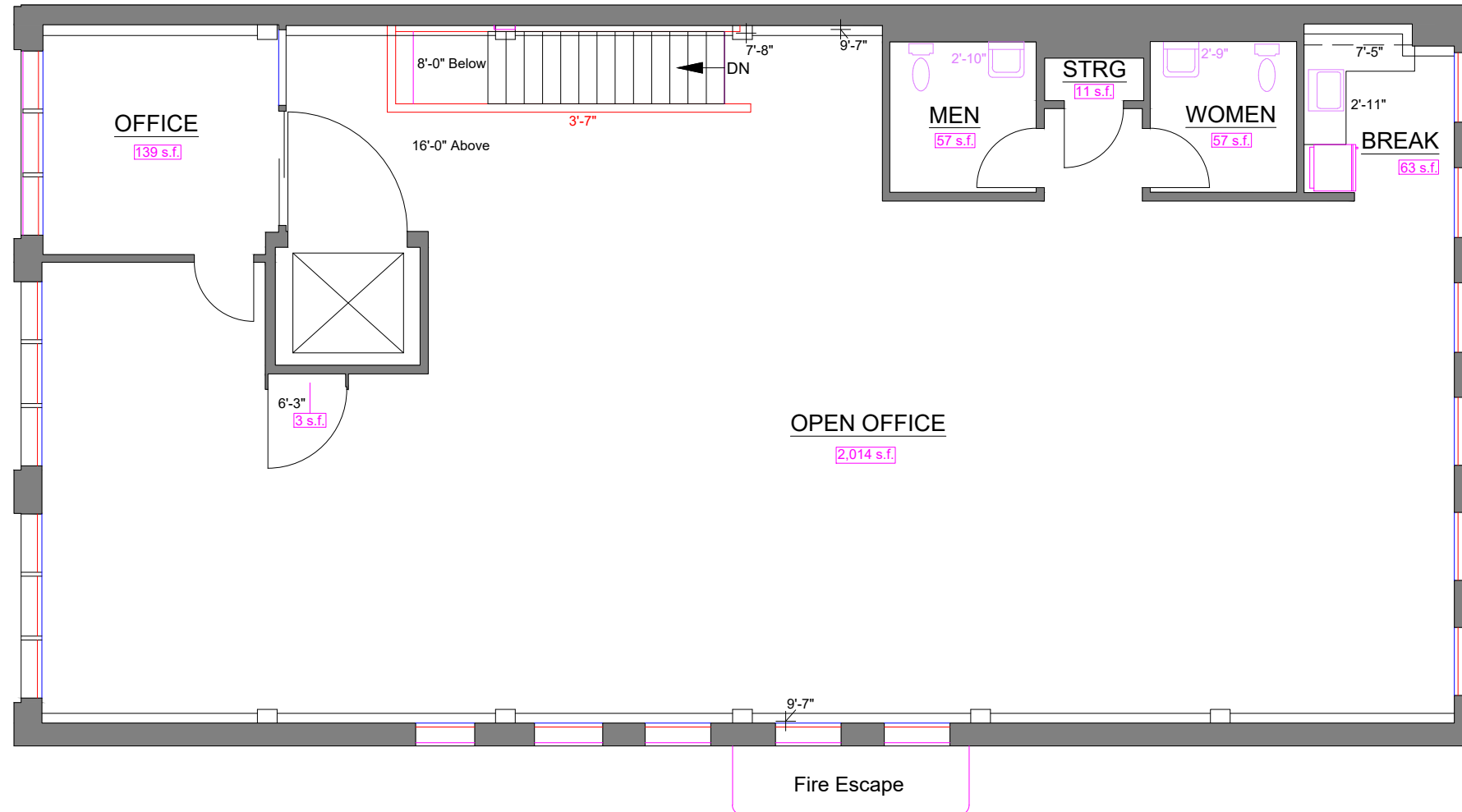
SCALE: 1/8" = 1' - 0"

LASERTECH® is a registered US trademark of Lasertech® Floorplans Ltd.
 Copyright 1998 Lasertech® Floorplans Ltd., All Rights Reserved



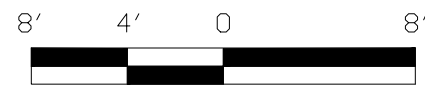
<https://LT-FP.com>
 TEL: (888) 393-6655
 FILE: 26-092

ROOM AREA PLAN



Survey Accuracy: +/- 0.13 %

Note: All dimensions shown are rounded to the nearest inch, for informational purposes only. All measurements are recorded to 1/8" accuracy as documented in the final CAD drawing supplied.



SCALE: 1/8" = 1' -0"

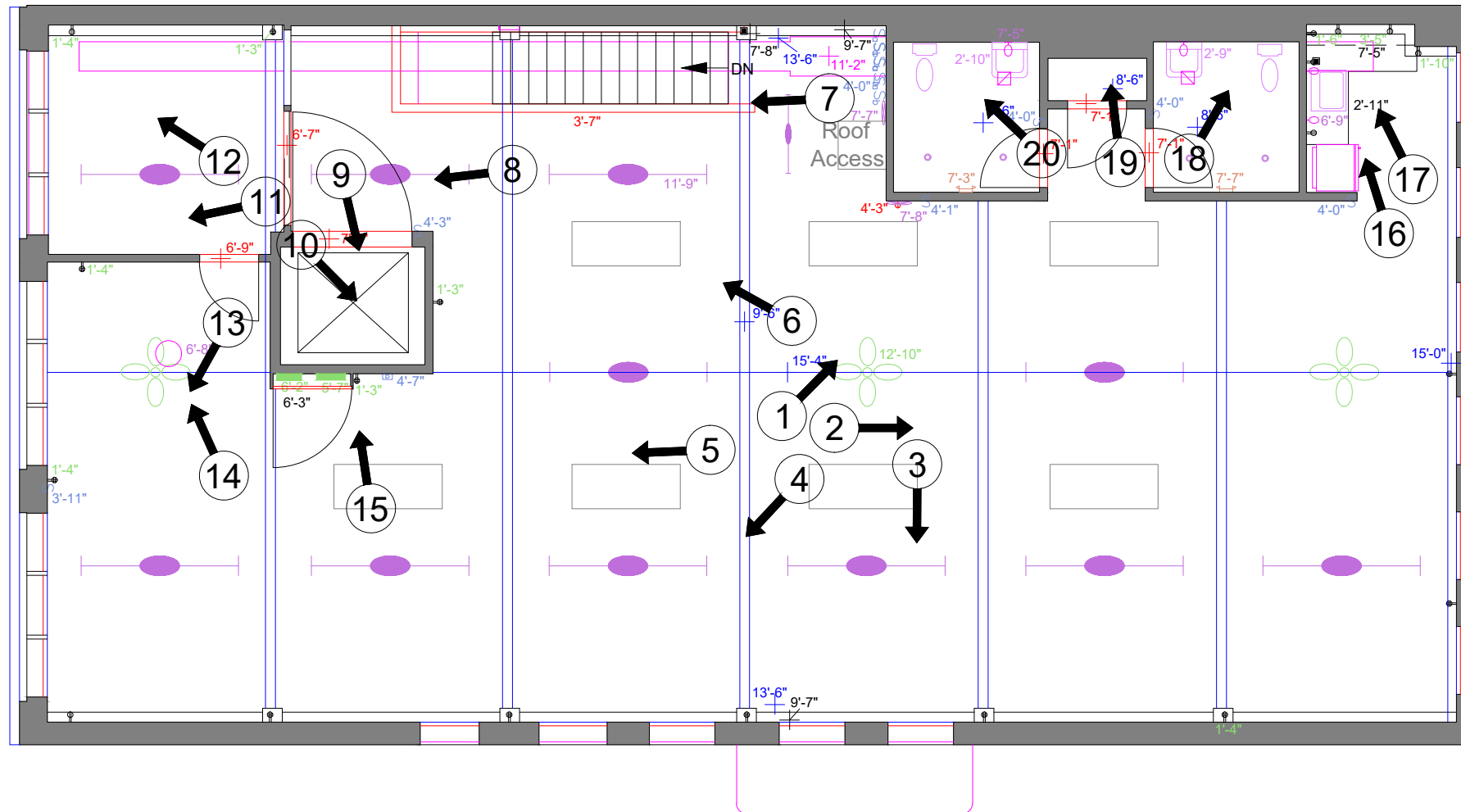
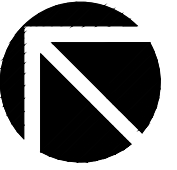
LASERTECH® is a registered US trademark of Lasertech® Floorplans Ltd. Copyright 1998 Lasertech® Floorplans Ltd., All Rights Reserved

*Measured Area represents the footprint of the floor, and is used solely for billing purposes. It is NOT to be used for leasing purposes.



<https://LT-FP.com>
 TEL: (888) 393-6655
 FILE: 26-092

PHOTO KEYMAP



SCALE: 1/8" = 1' - 0"

LASERTECH® is a registered US trademark of Lasertech® Floorplans Ltd.
Copyright 1998 Lasertech® Floorplans Ltd., All Rights Reserved



<https://LT-FP.com>

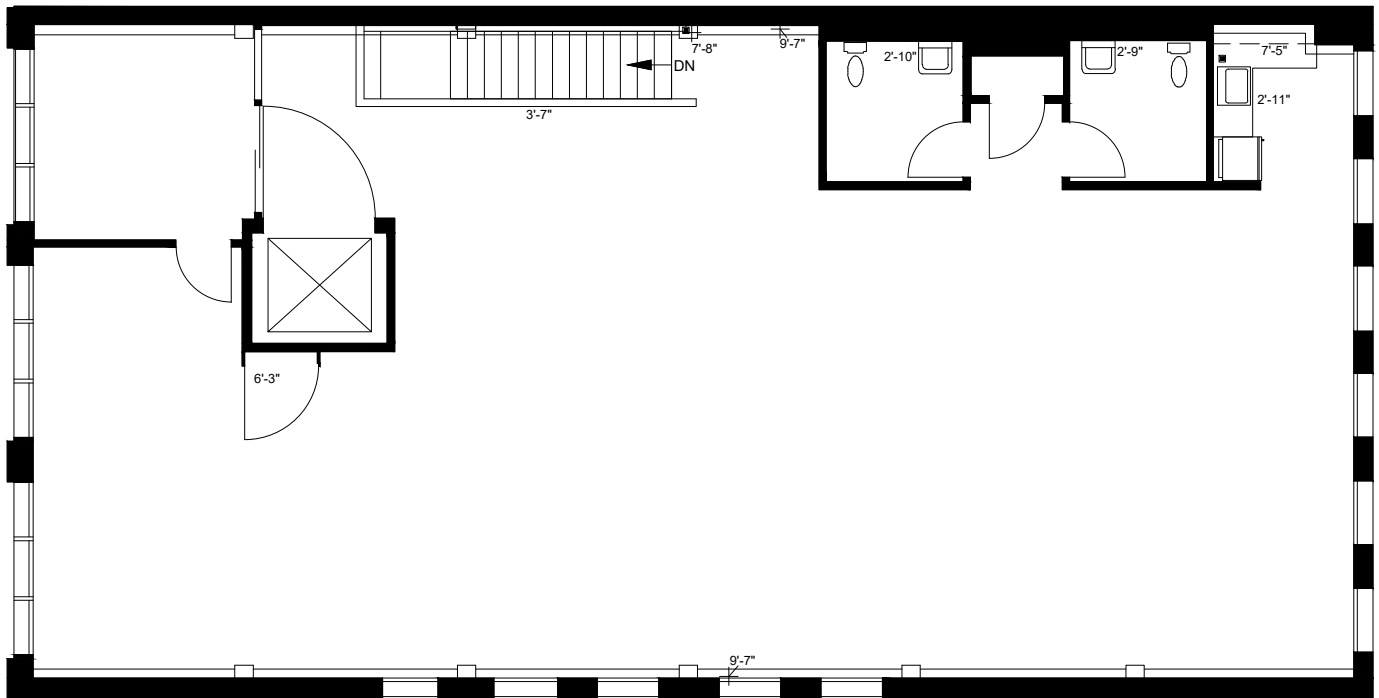
TEL: (888) 393-6655
FILE: 26-092

EVACUATION PLAN

161-165 NATOMA ST

2nd Floor

EMERGENCY PHONE #: 911



★ YOU ARE HERE  ELEVATOR **FC** FIRE HOSE CAB

 STAIRWAY

 FIRE EXTINGUISHER  PULL BOX

 EXIT ROUTES



PERSONS WITH DISABILITIES
SHALL CALL 911 TO REPORT THEIR
LOCATION & PROCEED TO NEAREST
STAIRWELL & AWAIT ASSISTANCE.
ALL ALARMS - BELL SOUND

